

EVIL Respirator LPR Instruction Sheet

Here is the abridged version. This implies that you know enough to de-gas your Impulse and take all the paint out. As always, if you do not feel comfortable taking your Impulse apart, please take it to someone who will not destroy your equipment. If you have questions, please call **1-800-579-1633** and ask or email us at **tech@evil-paintball.com**.

Warning! Read all instructions before starting.

1. Remove the front valve cap.
2. Take off the vertical asa or front grip and inspect to see if there is a set screw underneath the Tapeworm side of the gun. Some Impulses have the set screw under the asa holding the Tapeworm in place and others have the set screw on the other side of the asa. If yours has a set screw under the Tapeworm side, the set screw has to be removed before removing the Tapeworm. If you have a set screw on the Tapeworm side, but you don't have a Tapeworm, that set screw still has to be removed before installing the Respirator. If you have a Tapeworm, it has to be removed once the screw is out and then the threads have to be cleaned before proceeding.
3. For best performance, the Respirator should be installed with an Evil Valve. If you wish to keep your stock valve, you will have to cut your stock valve spring to fit. If you're using the Evil valve, use the spring that comes with the kit, but you won't use the big black plastic spring guide.
4. If you aren't installing an Evil Valve, skip to step 5. Install the valve from the back. Make sure the o-rings are properly greased with the large hole towards the front of the gun and the larger non-through hole facing down. If the valve does not slide into place, use the alternate 70 durometer o-rings provided in the package or the stock o-rings off the stock valve instead.
5. Unscrew the front cap of the Respirator. Grease the o-rings on the snake (the part that goes in the hole normally reserved for a tapeworm). Slide the snake in until the Respirator threads flush up against the body of the gun where the valve cap was screwed in. Use a wrench on the flats of the Respirator to turn the Respirator while pushing evenly with your thumb on the snake.
6. Once the Respirator is screwed all the way into place, use a 1/8th Allen wrench to back out (counterclockwise if looking at the front of the gun) the Respirator internal adjustment screw until the top of the adjustment screw is flush with the Respirator itself. Screw the Respirator cap back onto the front of the Respirator.
7. Once the asa is back together and the tiny set screw under the asa is reinstalled with some sort of thread sealer, reinstall your vertical regulator or front grip. Install a low pressure gauge on the back of the gun that can read in the 50 to 200 range. This gauge should be removed once the Respirator is set, it is just to be used as a guide for setting up your Respirator. Some people put their low pressure bleed back in that port, especially if they up their line pressure over 200 psi. Air up and check for leaks.

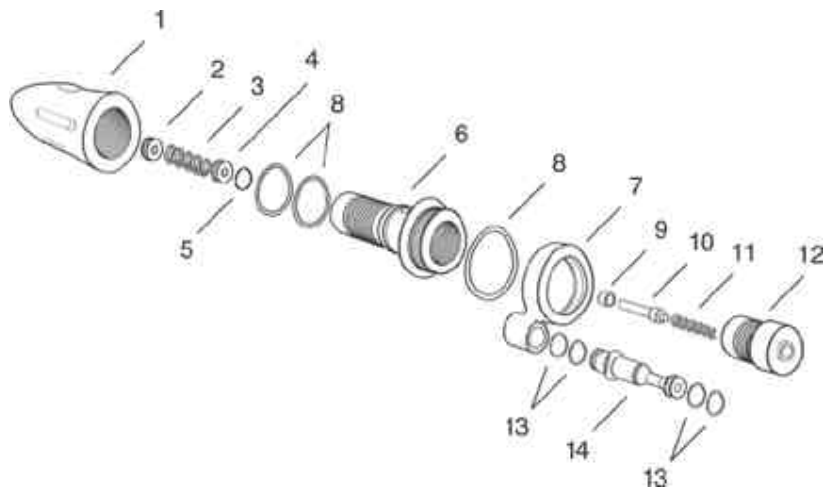
8. Begin by setting your input pressure to @ 200 psi. Optimum pressures will vary from gun to gun and gauges are rarely dead on accurate. Some experimentation with pressure is necessary for best performance. These pressures are just a guide to get you started.
9. Use a 1/8th Allen wrench to adjust the Respirator to @ 110 psi. The gauge on the back of the Impulse should show your Respirator pressure as you adjust it. Remember, when adjusting any regulator down, you must shoot the gun for the new settings to take effect. Paintball gauges are very inaccurate and may be off +/- 20 psi.
10. Shoot the Impulse with the pressures set at 200 psi going into the gun and 110 psi from the Respirator and listen for shoot down. Adjust the Respirator pressure up until the gun cycles quickly without shooting down.
11. Chronograph. If the velocity is low, turn the Respirator up. The Respirator works best below 160 psi. If the velocity is high, turn the Respirator down.

For Experts Only - We've had excellent results with the line pressure as high as 300 PSI. In order to set your line pressure this high, you will have to remove the Smart Parts low pressure bleed and install it in the back of the gun where the gauge for bolt pressure was while setting the Respirator. We saw a huge increase in shots per fill with the line pressure up this high. Be warned, this may void your solenoid warranty from Smart Parts.

Trouble Shooting - If your Evil Respirator is working like a sweet looking front cap and not regulating, you have to grease the black poppet o-ring. With no air in the marker unscrew the front cap of the LPR. With your 1/8 Allen Key remove the stainless adjusting screw. Then take out the main spring. Next, remove the brass poppet with the black o-ring. Lubricate that o-ring with the Dow Corning 33 grease that was included with your Impulse. Reinstall the brass poppet then the spring and then the stainless adjusting screw. Next screw the front cap back on and try adjusting your Respirator.

EVIL Respirator LPR Parts List

01	EVIL Impulse Reg Cap Black	57636A
02	EVIL Impulse Reg Adj Screw	57642
03	EVIL AC Reg Piston Spring	57619
04	EVIL AC Reg Piston	57617
05	O-Ring 010/70 Buna	57608
06	EVIL Impulse Reg Base Black	57649A
07	EVIL Impulse Reg Manifold Black	57635A
08	O-Ring 016/70 Urethane	10361
09	PMI Valve Poppet Seal	91007
10	EVIL Reg Poppet SS	57618
11	EVIL Reg Poppet Spring	57620
12	EVIL Impulse Reg Seat	57637
13	O-Ring 009/70 Urethane	57643
14	EVIL Impulse Reg Snake	57639



For any other questions contact us at 1-800-579-1633
or tech@evil-paintball.com