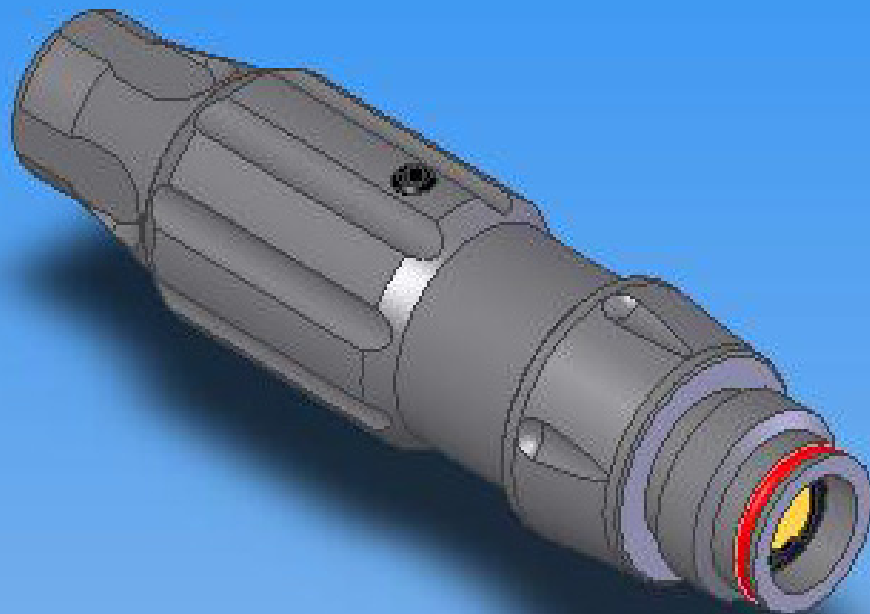


EVIL DETONATOR

OWNER'S MANUAL



The EVIL DETONATOR represents a new standard for Second Stage regulators. It's standard .825-14 NGO interface, and 1/8 NPT inlet make it an almost universal fit on currently available Markers. It's virtually non-existent Response Curve makes it the only logical choice for today's High Tech, Low Pressure tournament grade equipment!

SPECIFICATIONS

Weight	5.6 ounces
Length (@ max press setting)	4.5 inches
Range of Adjustment (Output)	100 to 550 PSI
Maximum Input Pressure	1200 PSI
Response Curve	>0.5%
Inlet Port	1/8 NPT
Outlet Port	Std .825-14 NGO

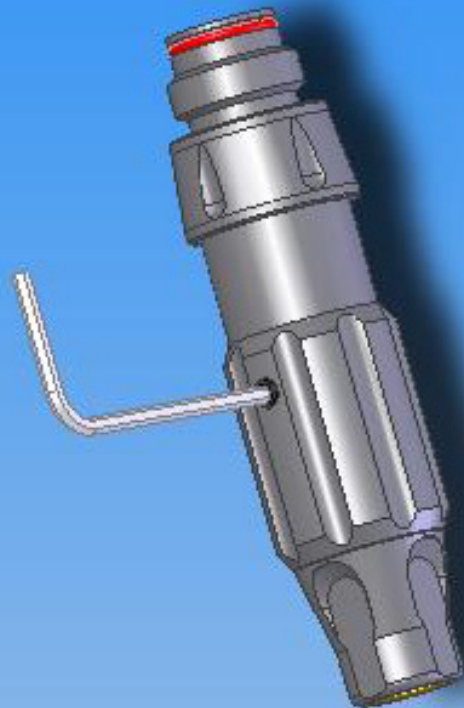
ADJUSTMENT

To adjust Output pressure on the Detonator, first loosen the locking screw (using a 3/32" Allen key) in the Adjusting Collar. It is not necessary to remove this screw, but it does have to be turned out at least two turns in order to clear the detent pocket it engages.

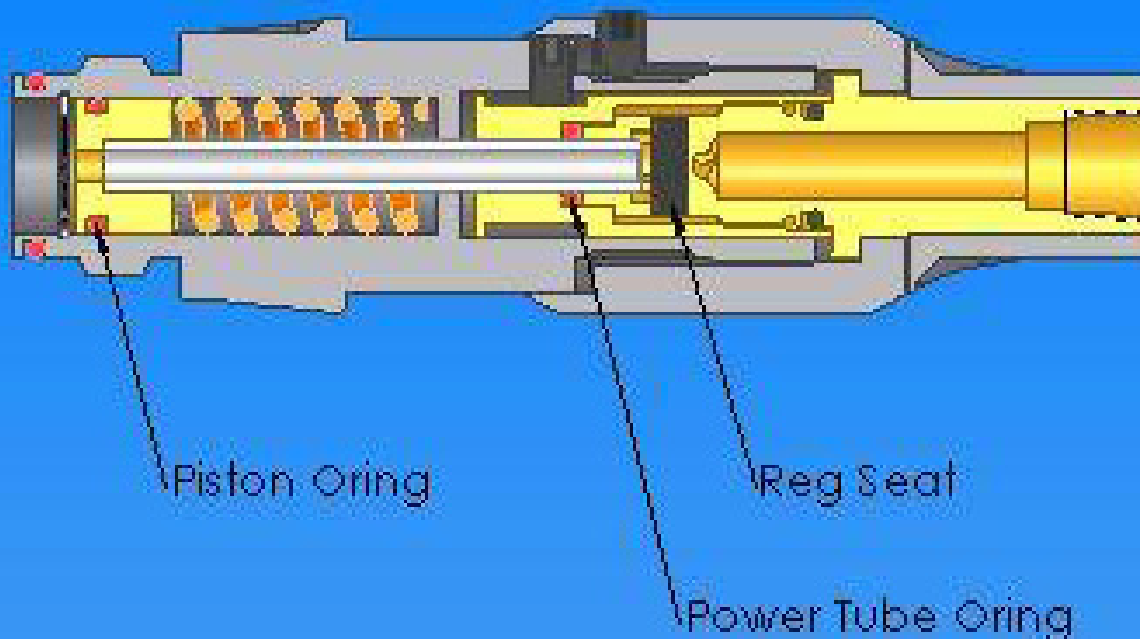
Once this has been done, the adjusting collar can be rotated to accomplish the pressure adjustment.

PLEASE NOTE: If you are reducing the output pressure, remember to either cycle the marker, or otherwise vent the downstream pressure as the adjustment is made. Failure to do so will produce inaccurate pressure readings, and possible premature wear on the regulator sealing element.

Once the adjustment has been made, re-tighten the locking screw, making sure that it engages one of the eight detent pockets provided. Because this screw engages these positive detents, it is not necessary to tighten beyond "Finger Snug".



ROUTINE SERVICE



There are only three wear items that will eventually require attention.

The first is the piston Oring, which is a standard 015 series urethane ring. If this ring wears, you will experience leakage around the adjusting collar. To replace this ring, remove the snap ring, and gently remove the piston assembly from the reg body. No other disassembly is required. Be sure to lube the new Oring with airgun or air tool oil, and to replace the snap ring when re-assembling.

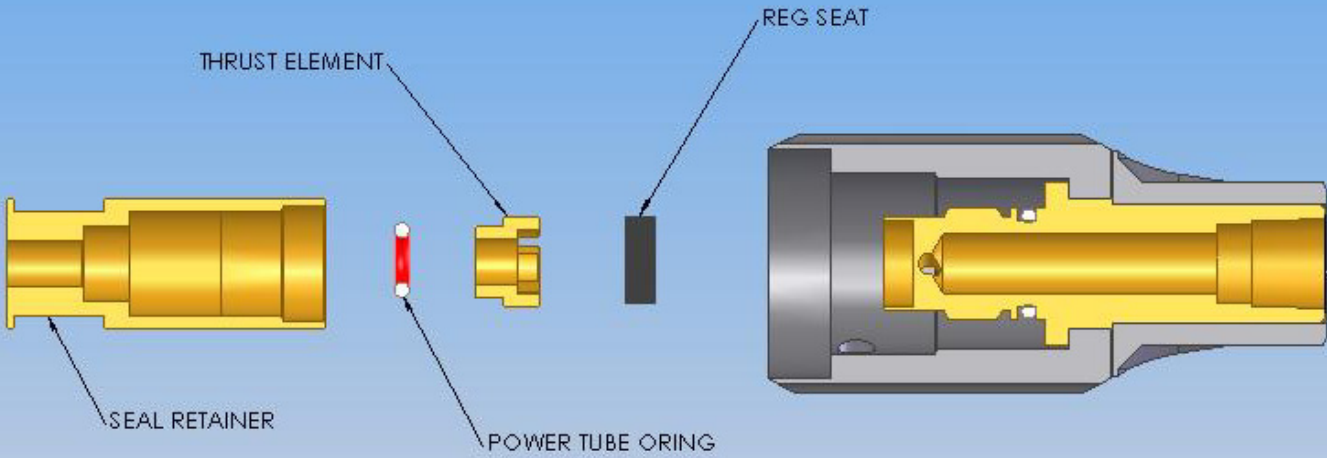
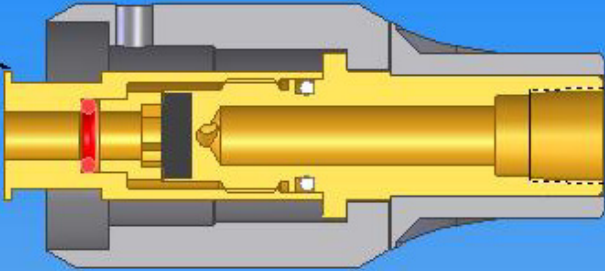
The power tube Oring and the Reg Seat are both reached by the same procedure, and it will probably save work if they are replaced as a set. A worn power tube Oring will cause leakage around the adjusting collar, and a worn Reg Seat will cause inaccurate delivery pressure.

To access these parts, first remove the Adjusting Collar lock screw, and turn the Adjusting Collar to it's maximum travel. This will expose a second set screw, which also should be removed (5/64" Allen key). Once that is done, you will be able to unscrew the Adjusting Collar the rest of the way, and separate the reg into it's two halves.

When that step is completed, you can grasp the top end of the Seal Retaining Cap with a pair of SOFT JAW pliers and unscrew it . This will give you access to both the Oring and the Reg Seat. (See the following page for detail illustration.)

To re-assemble, simply reverse the procedure.

GRASP HERE WITH SOFT JAW
PLIERS TO UNSCREW SEAL RETAINER.



ITEM NO.	QTY.	PART NO.
1	1	INNER TUBE M2003B-600
2	1	REG SEAT M2003B-900
3	1	THRUST ELEMENT M2003B-400
4	1	REG SEAL RETAINER M2003B-500
5	1	ADJUSTING COLLAR M2003B-200
6	1	BOTTOM CAP M2003B-300
7	1	MAIN BODY M2003B-100
8	1	POWER TUBE M2003B-800
9	1	PISTON M2003B-245
10	1	SETScrew 8-32 M2003B-1000
11	1	ORING 008-90U
13	1	ORING 012-90U
14	1	SNAPRING M2003B-1300
15	1	ORING 015-90U
16	1	SETScrew BALL END 10-32 M2003B-1100
12	1	ORING 011-70B
13	1	ORING 012-90U
14	1	SNAPRING M2003B-1300
15	1	ORING 015-90U
16	1	SETScrew BALL END 10-32 M2003B-1100
17	1	MAINSpring M2003B-700

