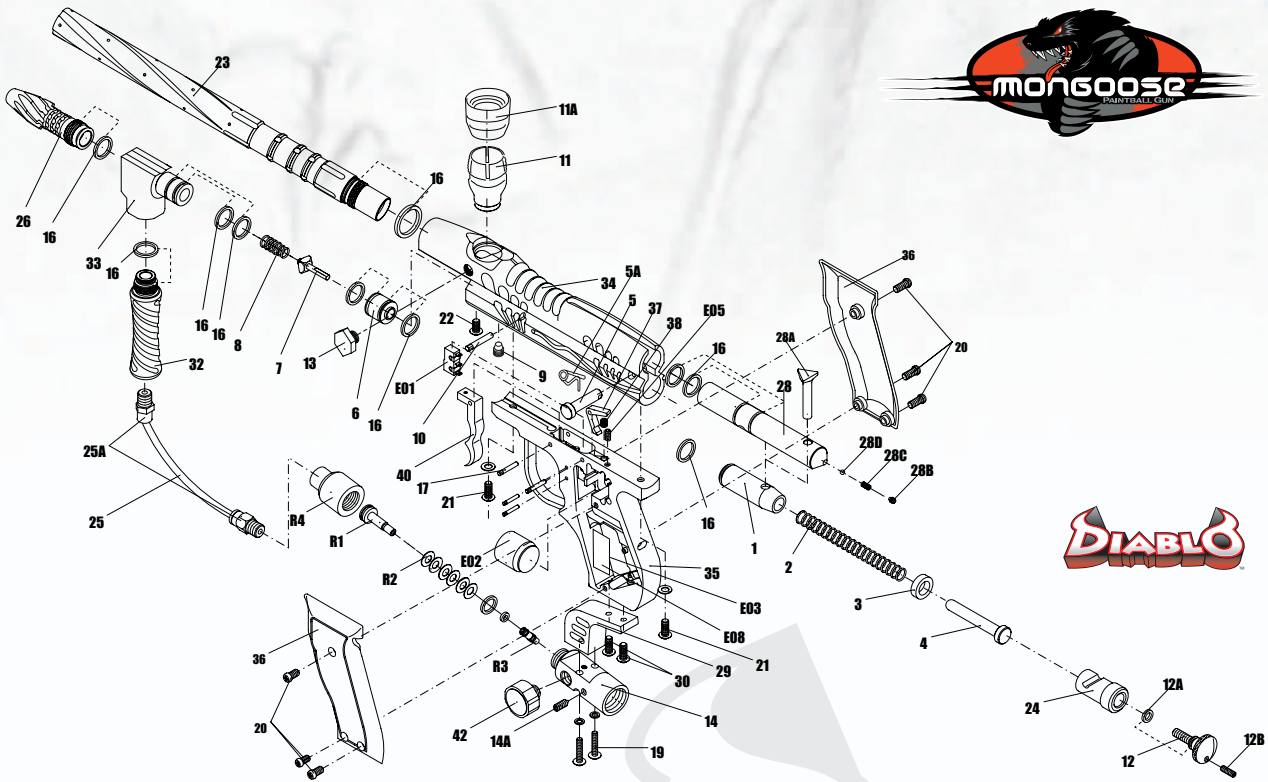


MONGOOSE/MONGOOSE LCD/REINCARNATION

Mongoose/Mongoose LCD/Mongoose Reincarnation Schematic

NPS PARTS



NPS EXCLUSIVE PARTS



Order schematics parts online at www.paintballsolutions.com or call 1-800-220-3222

MONGOOSE Parts List

- | | | |
|--------------------------|-------------------------------|-------------------------|
| 1. Hammer | 14. Tank Adapter | D. Ball Bearing |
| 2. Main Spring | A. Regulator Adjustment Screw | 29. Drop Forward |
| 3. Recoil Pad | 16. Multi-Use O-Ring | 30. Drop Forward Screws |
| 4. Spring Strut | 17. Grip Frame Pin Set | 32. Gas-Thru |
| 5. Quick Strip Pin | 19. Bottomline Screws | 33. Vertical ASA |
| A. R-Clip | 20. Grip Panel Screws | 34. Main Body |
| 6. Gas Valve | 21. Grip Frame Screws | 35. Grip Frame |
| 7. Cupseal | 22. Vertical ASA Screw | 36. Grip Panels |
| 8. Valve Spring | 23. Barrel | 37. Electronic Sear |
| 9. Valve Gas Plug | 24. Hammer Plug | 38. Sear Spring |
| 10. Valve Stop Pin | 25. Gas Line | 40. Trigger |
| 11. Vertical Feed Neck | A. Macro Line Fittings | 42. 0-1200 PSI Gauge |
| A. Clamp Feed Adjustment | 26. Low Pressure Chamber | R1. Regulator Drive Pin |
| 12. Velocity Adjuster | 28. Bolt | R2. Beveled Washers |
| A. Anti-Vibration O-Ring | A. Connecting Pin | R3. Regulator Piston |
| B. Locking Set Screw | B. Set Screw | R4. Regulator Cap |
| 13. Metal Ball Detent | C. Spring | |

MONGOOSE LCD Parts List

E03. Circuit Board

**E08. LCD Screen

REINCARNATION Parts List

- | | |
|--|------------------------------|
| 14. Reincarnation Tank Adapter | 34. Reincarnation Main Body |
| 26. Reincarnation Low Pressure Chamber | 35. Reincarnation Grip Frame |
| 32. Reincarnation Gas Thru | E03. Circuit Board |
| 33. Reincarnation Vertical ASA | |

Electronics

- E01. Wiring Harness/Trigger Switch
- E02. Solenoid
- E03. Circuit Board
- *E04. On/Off Switch Screws
- E05. Solenoid Set Screws
- *E06. Circuit Board Screws
- *E07. Battery Lead



*Not Shown In Schematic. **In LCD Version ONLY